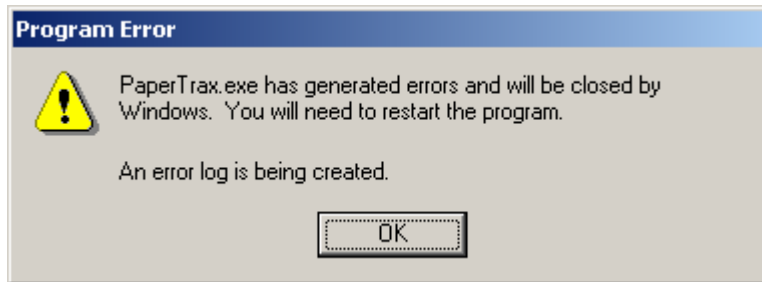


In PaperTrax, ever had a user type in all of their plot information, only to get this error when they clicked OK?



This error happens on computers running Windows 2000. It is a result of PaperTrax being unable to work with MDAC v.2.7 (Microsoft Data Access Components), which comes with Windows 2000.

To fix this error, simply install MDAC v.2.8. It is available at Microsoft's website, located here:

<http://www.microsoft.com/downloads/details.aspx?FamilyID=6c050fe3-c795-4b7d-b037-185d0506396c&DisplayLang=en>

It may also be available in the Brownies directory on your server if this has previously been an issue at your office.

NOTE: Be aware that the installation usually requires the user's computer to be restarted to complete the installation, so make sure that all of the user's programs and files are closed prior to starting the installation.